

# VSPCF Quick Start Guide

**1) Select your Bluetooth® Viator® Interface** →

**2) Uncheck “Disable Port Mapping”** →

**3) Select the “Port” tab** →

**4) Select the port you want to remap the Bluetooth Viator Interface to** →

**5) Check the “Map On” box** →

**6) Click the “Apply” button** →

**7) Close ViatorCheckBT™**

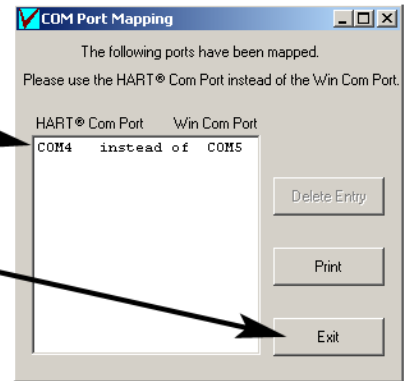
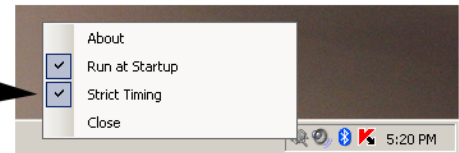
ViatorCheckBT will display a dialog to remind you which port to use with your HART® application. Com4 in this example.

Click the “Exit” button to close this dialog box.

VSPCF will start in the system tray. You can move your mouse over the VSPCF icon to verify the remapped port number and connection status.



Right-click the VSPCF icon and select the “Strict Timing” option to improve performance with certain applications such as Emerson’s AMS.



If communications are unreliable when running on battery, modify your Power Manager profile to set the CPU Performance to maximum. This issue is more common with the Core2 processor family but can occur with any laptop computer.

HART® is a registered trademark of the HART Communication Foundation. MACTek® and VIATOR® are registered trademarks of MACTek Corporation. VIATORCheckBT™ is a trademark of the MACTek Corporation. The Bluetooth® word mark and logos are registered trademarks owned by Bluetooth SIG, Inc. and any use of such marks by MACTek, Corporation is under license



**MACTek Corporation**  
 7380 Stoneham Road, Gates Mills, OH 44040 USA  
 +1 440 423 0955(voice) +1 440 423 0967 (fax)  
 e:tholmes@mactekcorp.com w:www.mactekcorp.com